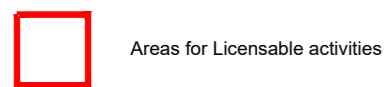
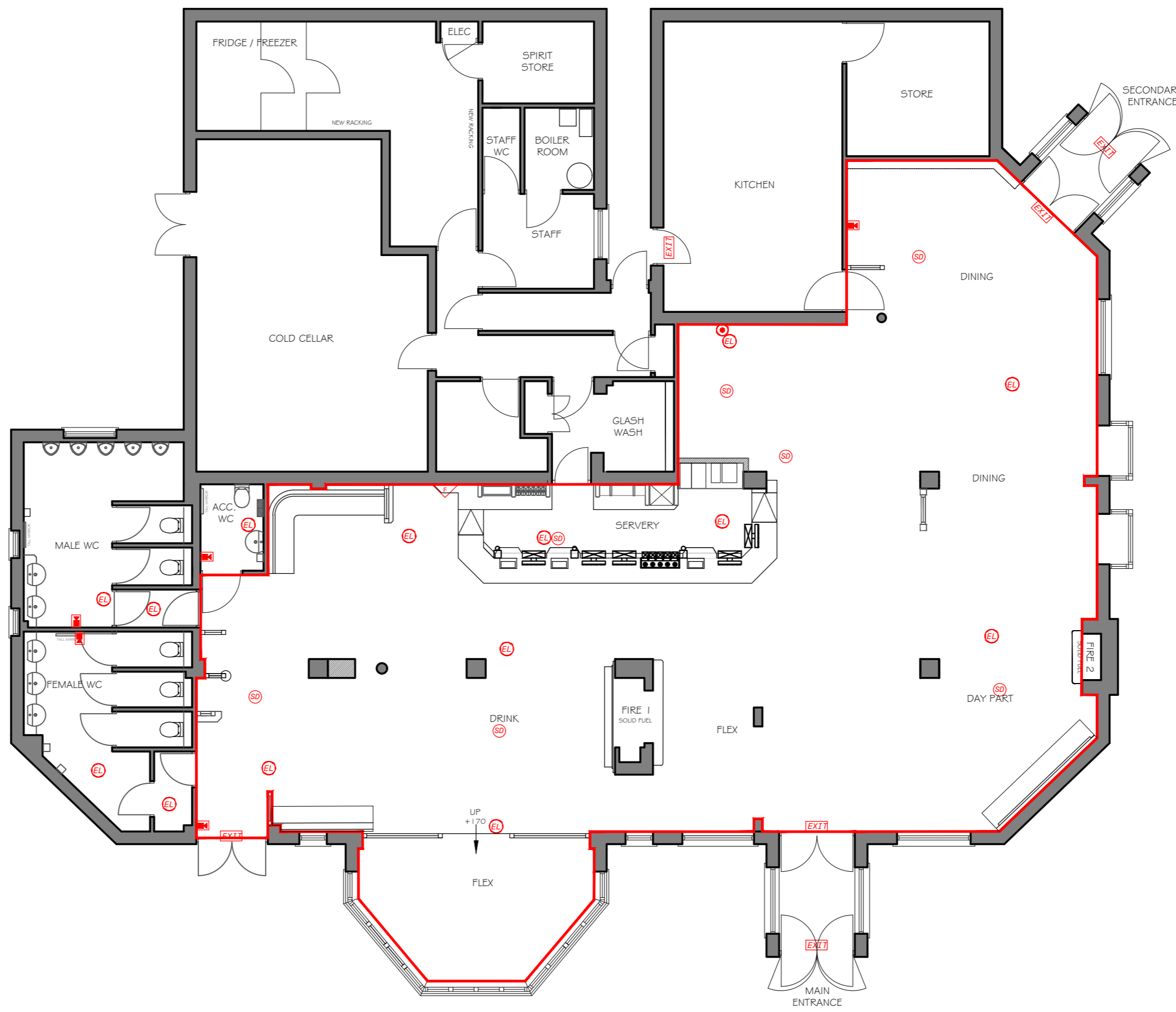
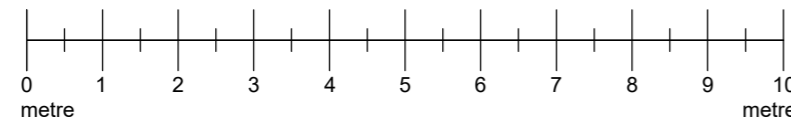


**Licensing key**



**Note:**  
Items shown on this plan which are not part of the statutory requirements are shown for indicative purposes only. This would include loose or fixed furniture in certain circumstances, the position of toilet cubicles, CCTV cameras and fire safety equipment not specified in the Regulations. These are shown upon the plans for illustrative purposes only and may be moved at the discretion of the license holder.

The current location of fire safety equipment and other safety equipment is not shown as these may be subject to variation in the future as necessary and where applicable in liaison with the Fire Officer. These may be subject to variation in the future as necessary and where applicable in liaison with the fire officer or after fire risk assessment.



Proposed Ground Floor Layout

- Fire symbols**
- Fire alarm call point
  - Green em door release call point and test key
  - Smoke detector
  - Heat detector
  - Fire blanket
  - Alarm sounder
  - Combined alarm sounder and smoke detector
  - Fire action notice
  - "Fire door keep closed" signage
  - "Fire door keep locked" signage
  - "Push bar to open" and "fire door keep clear" signage
  - 30min fire door with intumescent smoke seals
  - 60min fire door with intumescent smoke seals
  - Self closing device
  - Vision panel
  - Push bar ironmongery
  - 3 hour self contained non-maintained luminaire
  - 3 hour self contained and maintained luminaire with directional arrow where necessary
  - 3 hour self contained and maintained external luminaire
  - Thumb turn door release - simple fastening
  - Mechanical heavy usage Digilock door release - simple fastening with dual backplate and hold open function
  - Xenon beacon unit with integral sounder to comply with the Equality Act 2010
  - Recessed/surface mounted fire alarm zone indicator/control panel
  - Magnetic door holder connected to fire alarm with fail safe release upon activation
  - Magnetic lock and fixing brackets with digital access control panel and push button release
  - Foam fire extinguisher
  - Carbon Dioxide fire extinguisher
  - Dry Powder fire extinguisher
  - 9-litre water fire extinguisher
  - Wet chemical fire extinguisher

**aba**  
architecture and interiors  
globe works, kelham island, sheffield, s6 3ae 0114 201 5023  
www.abaarchitecture.co.uk

CLIENT: MAB EMBER INNS FY22 REMODEL  
PROJECT: THREE BROOKS. BUN:140430  
BRADLEY STOKE DISTRICT CENTRE  
BRADLEY STOKE  
BRISTOL  
BS32 8EF

TITLE: PROPOSED LICENSING LAYOUT  
INITIALS: ES DATE: DEC 21 SCALE: 1:100 (A2)  
NUMBER: 2383.101 REV: A STATUS: LICENSING