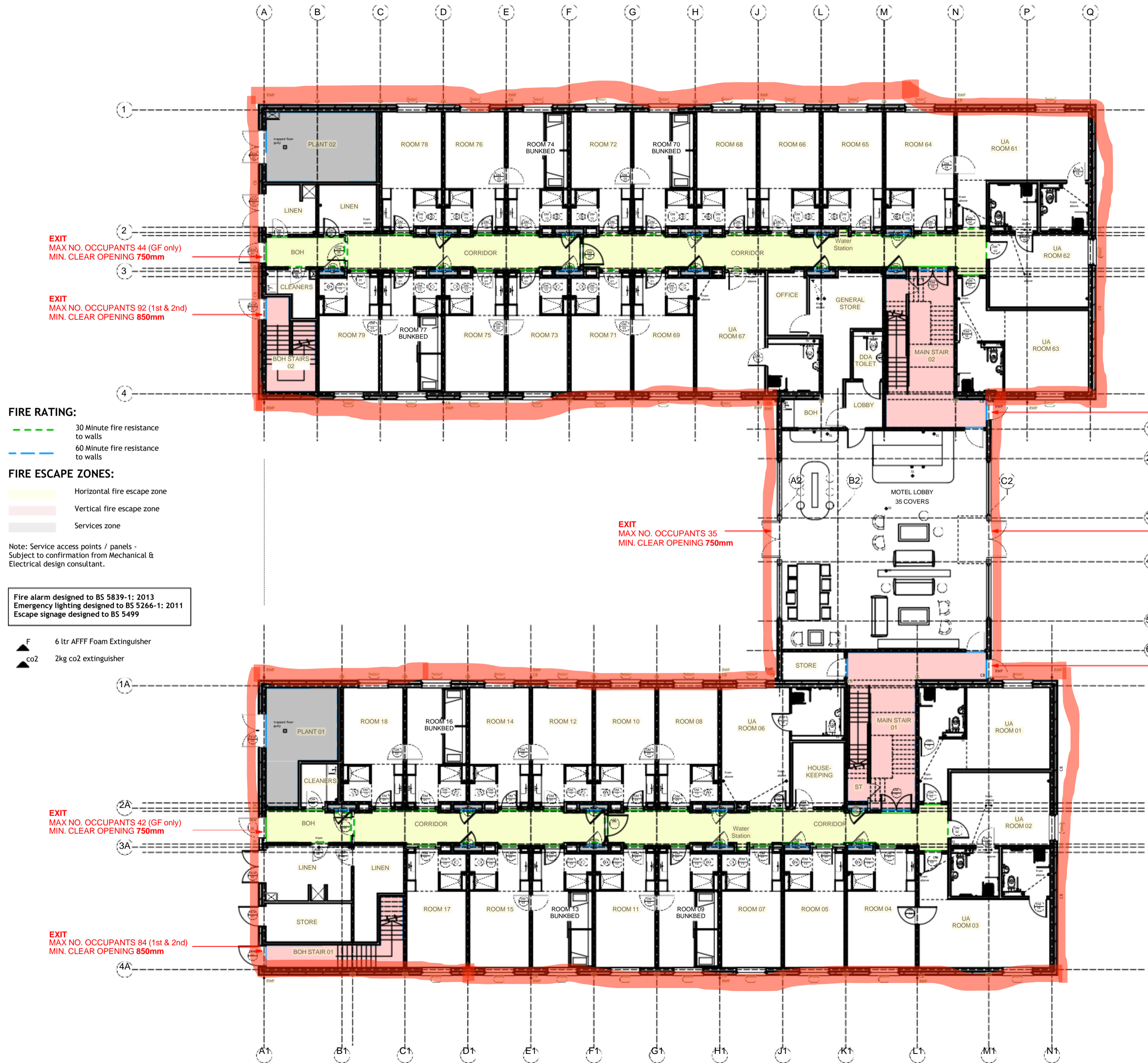


Licensable activities occur within the red line
Loose furniture is indicative only



EXIT
MAX NO. OCCUPANTS 136
(GF, 1st & 2nd)
MIN. CLEAR OPENING 1050mm

EXIT
MAX NO. OCCUPANTS 35
MIN. CLEAR OPENING 750mm

EXIT
MAX NO. OCCUPANTS 126
(GF, 1st & 2nd)
MIN. CLEAR OPENING 1050mm

EXIT
MAX NO. OCCUPANTS 44 (GF only)
MIN. CLEAR OPENING 750mm

EXIT
MAX NO. OCCUPANTS 92 (1st & 2nd)
MIN. CLEAR OPENING 850mm

FIRE RATING:
--- 30 Minute fire resistance to walls
--- 60 Minute fire resistance to walls

FIRE ESCAPE ZONES:
Horizontal fire escape zone
Vertical fire escape zone
Services zone

Note: Service access points / panels - Subject to confirmation from Mechanical & Electrical design consultant.

Fire alarm designed to BS 5839-1: 2013
Emergency lighting designed to BS 5266-1: 2011
Escape signage designed to BS 5499

F 6 ltr AFFF Foam Extinguisher
co2 2kg co2 extinguisher

Rev	Date	Description	By
A	31/03/20	Fire Extinguisher locations added.	AJB



1st Floor Arlington House, Park Five Business Center Exeter EX2 7HU
Tel. 01392 368426 www.axiomarchitects.co.uk

Client
CARTER LAUREN CONSTRUCTION LTD

Project
**MOLLIES MOTEL & DINER
CRIBBS CAUSEWAY,
BRISTOL**

Drawing
FIRE STRATEGY - GROUND FLOOR

Scale	Status	Date	Drawn	Checked
1:100 @A1	CONSTRUCTION	29/01/20	AJB	

Drawing No. **5146/210** Revision **A**