

This drawing is the copyright of Axiom Architects. The contractor is to check all site dimensions and levels before work starts. This drawing must be read with and checked against all structural and other specialist drawings, specification and bills of quantities. Notably architect of any discrepancies. The contractor is to comply with all current British Standards and Building Regulations whether or not specifically stated on these drawings. Do not scale from drawings.

NOTE :

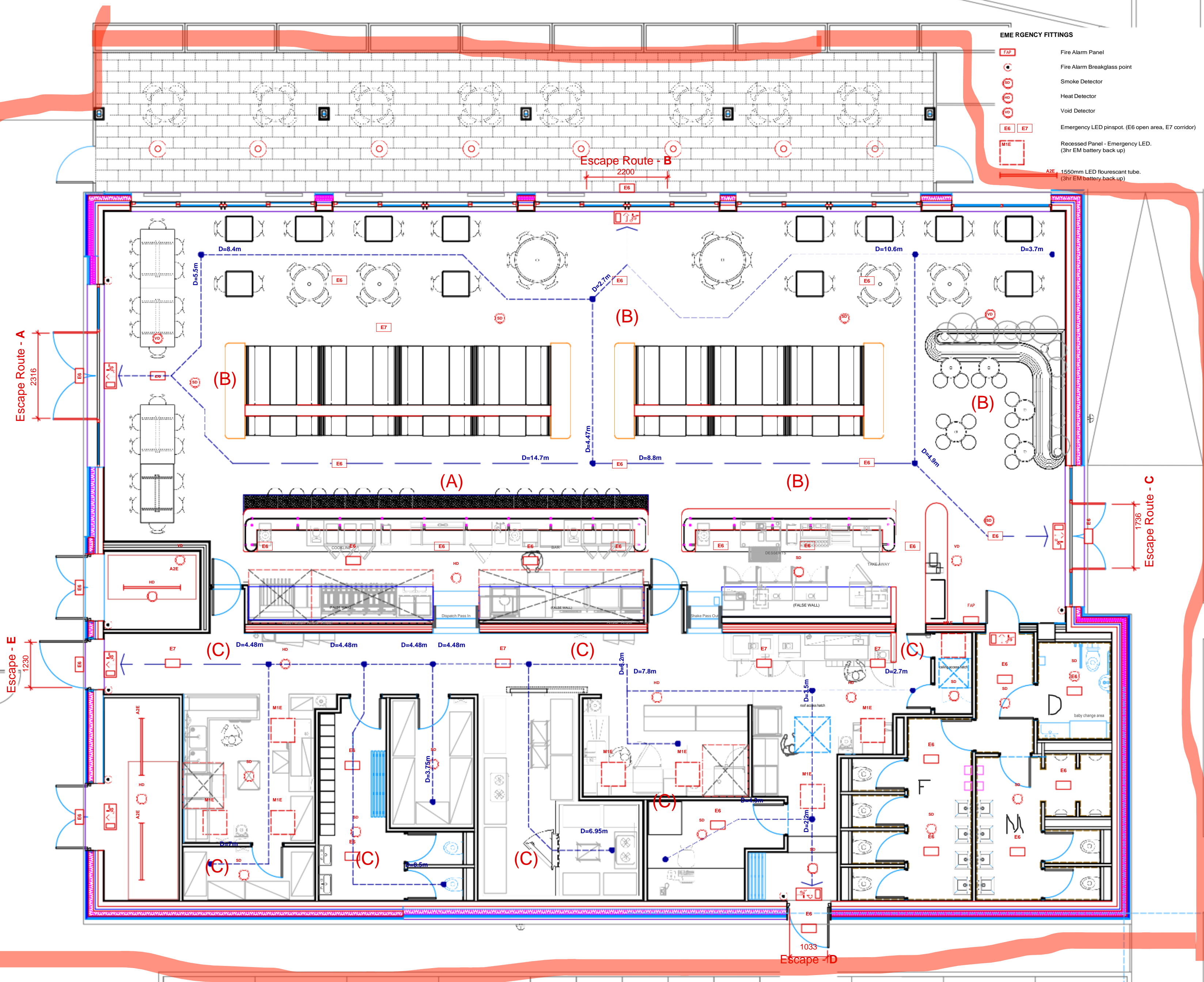
- All fire escape routes are unlocked during trading hours.
- In case of an emergency staff are trained to provide an assisted escape.
- BS 9999 : 2017
- Restaurant Risk Profile = B2
- Occupancy Characteristics - B - Occupants who are awake and unfamiliar with the building.
- Fire Growth Rate - 2 - Medium
- Min door width per person mm on B2 risk profile - 4.1
- Fire safety management - Level 2

Licensable activities occur within the red line
Loose furniture is indicative only

EMERGENCY FITTINGS

- FAP Fire Alarm Panel
- FAB Fire Alarm Breakglass point
- SD Smoke Detector
- HD Heat Detector
- VD Void Detector
- E6 E7 Emergency LED pinspot. (E6 open area, E7 corridor)
- M1E Recessed Panel - Emergency LED. (3hr EM battery back up)

AZE 1550mm LED fluorescent tube. (3hr EM battery back up)



Bar/Drinking Area
Escape Travel Distance - BS 9999 : 2017
Travel Distance (m) - Risk Profile B2
One-way travel - max 20m
Two-way travel - max 50m

Rev	Date	Description	By	Chk

AXIOM ARCHITECTS
100 Kings Yard, The Grove, Bristol, BS1 1HU
Tel. 01273 479434 www.axiomarchitects.co.uk

Client
CARTER LAUREN
Project
MOLLIES DINER
CRIBBS CAUSEWAY
BRISTOL
Drawing
GROUND FLOOR

FIRE STRATEGY

Scale	Status	Date	Drawn	Checked
4:50 @ A1	construction	8.12.20	dh	

Drawing No. Revision

5146-602