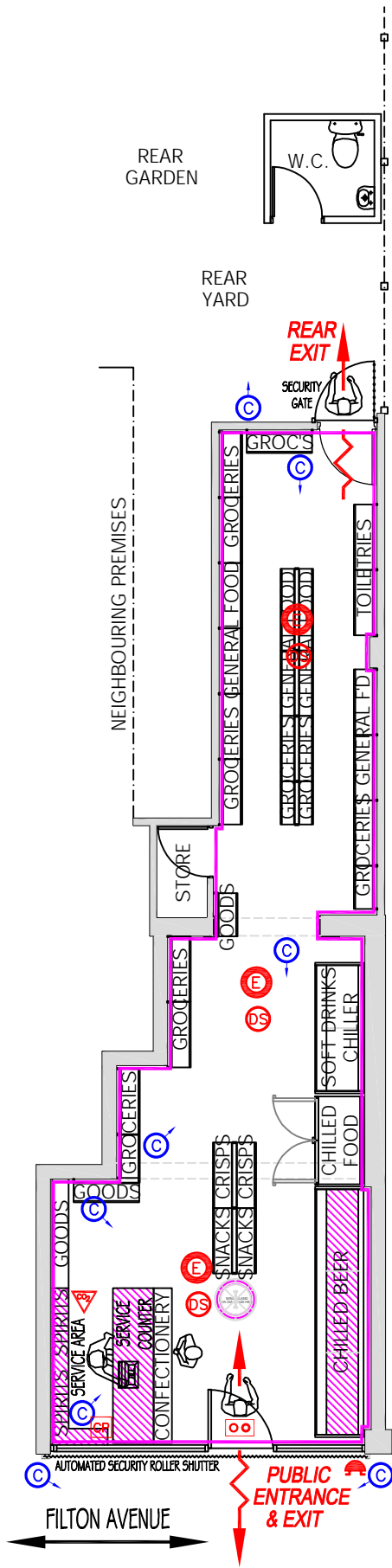


FIRE REGULATION SYMBOLS

- ⊕ Exit Boxes
- ⓔ Escape Lighting Points
- ⚠ Fire Extinguisher CO²
- Ⓢ Auto Smoke detector
- 🔊 Audible Warning Device
- Ⓢ Control Panel
- 📷 CCTV Camera
- Extent of licenced area



GROUND FLOOR PLAN LAYOUT

An electrically operated fire alarm system should comply with BS5839, Part 1:2002. The electrical installation should comply with approved Document P (electrical safety). It is essential that the fire detection and fire alarm systems are properly designed, installed and maintained. Where a fire alarm system is installed, an installation and commissioning certificate should be provided.

The smoke and heat alarm system is to be mains-operated and conform to BS5446, 1:2000 or BS5446, respectively: fire detection and fire alarm devices for dwellings, Part 1 specification for smoke alarms; or Part 2 specification for heat alarms

The emergency lighting installation is to comply with BS5266, Part 1, 2002 and the attention of the design/installing engineer drawn to paragraph 3.1 (construction and records) of BS5266, Part 1, 1988, which requires consultation with the Fire Authority. Firefighting equipment is to conform with BS EN3.

Fire Safety related signs and notices are to conform to BS5499, Part 1, 1990 (incorporating 'running man' symbol on fire exits) and other pictograms as required. Illuminated 'EXIT' signs are to conform to BS2560.

LICENCED Trade Legal Services Ltd

LTLS LTD, REGENT HOUSE, BATH AVENUE, WOLVERHAMPTON, WEST MIDLANDS, WV1 4EG
Tel: 01902 810048 Fax: 01902 810047 Mobile: 07793 315896 email: ltlis_westmids@hotmail.com

Application APPLICATION FOR A PREMISES LICENCE	Location <i>Premises to be known as:</i> Filton International Store 512 Filton Avenue, Filton Bristol BS7 0QE
By J.S. Uppal	Date 18/04/2021
	Drwg No. FILTONINTST-01

5 Metres @ Scale 1:100

