

Cromhall Parish

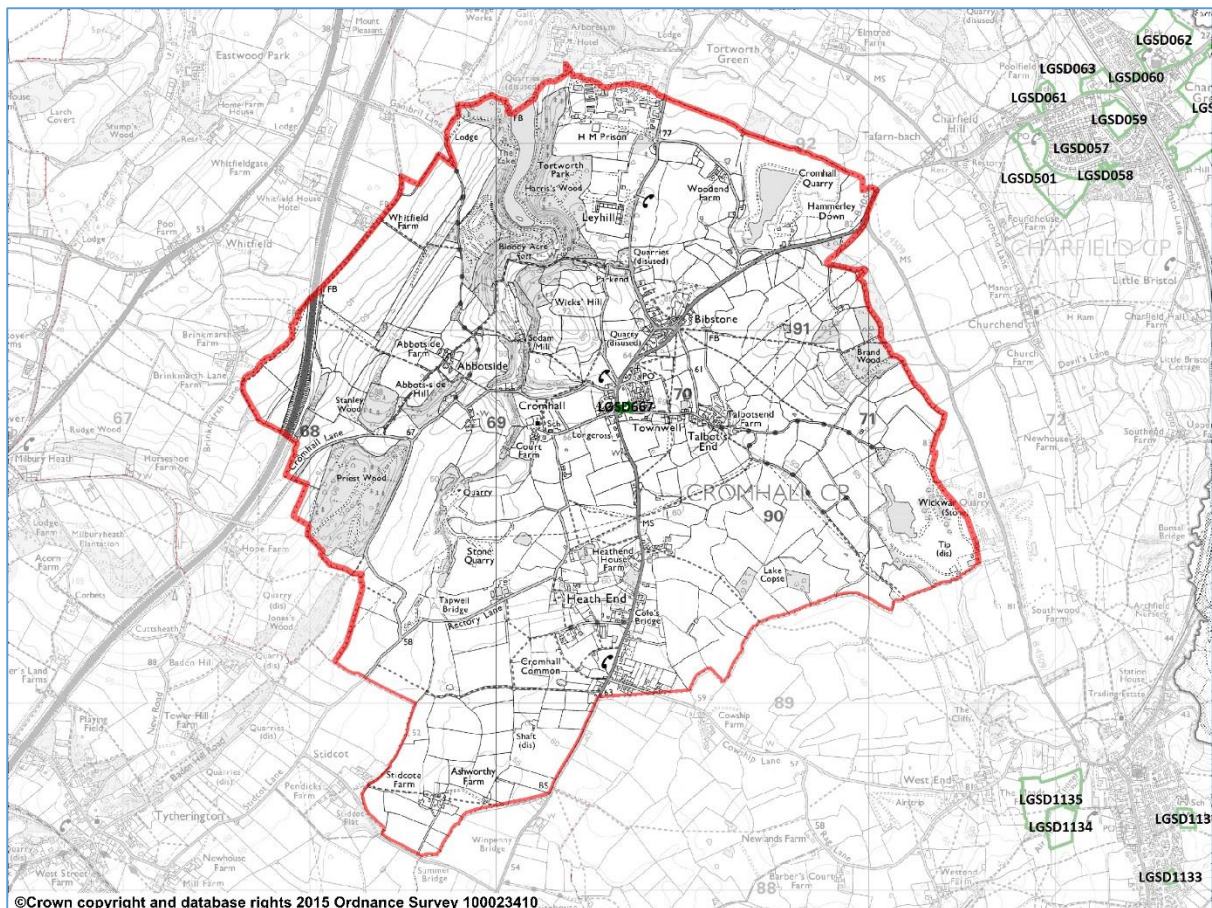
South Gloucestershire Policies, Sites and Places Plan: Local Green Space Designation Consultation

Introduction

This document should be read in conjunction with the List of Nominated Local Green Spaces, available from: www.southglos.gov.uk/policiesandsitesandplaces.

The overview map below shows the parish boundary and the Local Green Spaces which have been nominated within the stated Parish or unparished area. The tables that follow below display a map of each of the nominated Local Green Space; the name of the nominated space submitted; its code; and the Ward it is located in is also listed.

Overview Map of Cromhall



Cromhall Parish

| Green Space Code | Name of Nominated Space | Ward |
|------------------|---|----------------|
| LGSD667 | Proposed Village Green adjacent to Burltons, near Longcross | Charfield Ward |



Cromhall Parish

| Green Space Code | Name of Nominated Space | Ward |
|------------------|--|----------------|
| LGSD671 | The village green, where the millennium stone is located | Charfield Ward |

