

Local Green Space Consultation – June 2015 Response Form

Your name / organisation:

Winterbourne Parish Council

Address and contact details (please include phone number & email address):

[Redacted address and contact details]

In order to be able to proceed with the protection of the green spaces that have been put forward for designation as Local Green Spaces we must have for each space:

- details of the ownership of the land (if at all possible)
- a map of the boundaries
- an explanation of how it meets the criteria for designation and
- specific justification for why it is demonstrably special to the local community

Therefore please first check the List of Nominated Local Green Spaces and maps which can be viewed at: www.southglos.gov.uk/lgsd15 which identifies where further information on any of the above is still needed and then provide us with the additional information where necessary using this form:

PLEASE USE A SEPARATE FORM FOR EACH GREEN SPACE

Name and code of nominated space:

Please clearly reference the individual Local Green Space's code provided in both the List of nominated Local Green Spaces and the maps, available from www.southglos.gov.uk/lgsd15

LGSD1142 –Tuckett Field, Frenchay

A) Ownership of Local Green Space

Please indicate if you or your organisation are the landowner:

YES. Winterbourne Parish Council is the landowner.

If you are not the landowner can you provide their name and contact details?

Not applicable

Is the land owner aware of the proposal to designate their land?

YES

(If you are not the landowner please now continue to Section B)

If you are the landowner, are you in support of or objecting to the proposals to designate this land?

Yes. Winterbourne Parish Council being the landowner fully supports the proposal to designate this land.

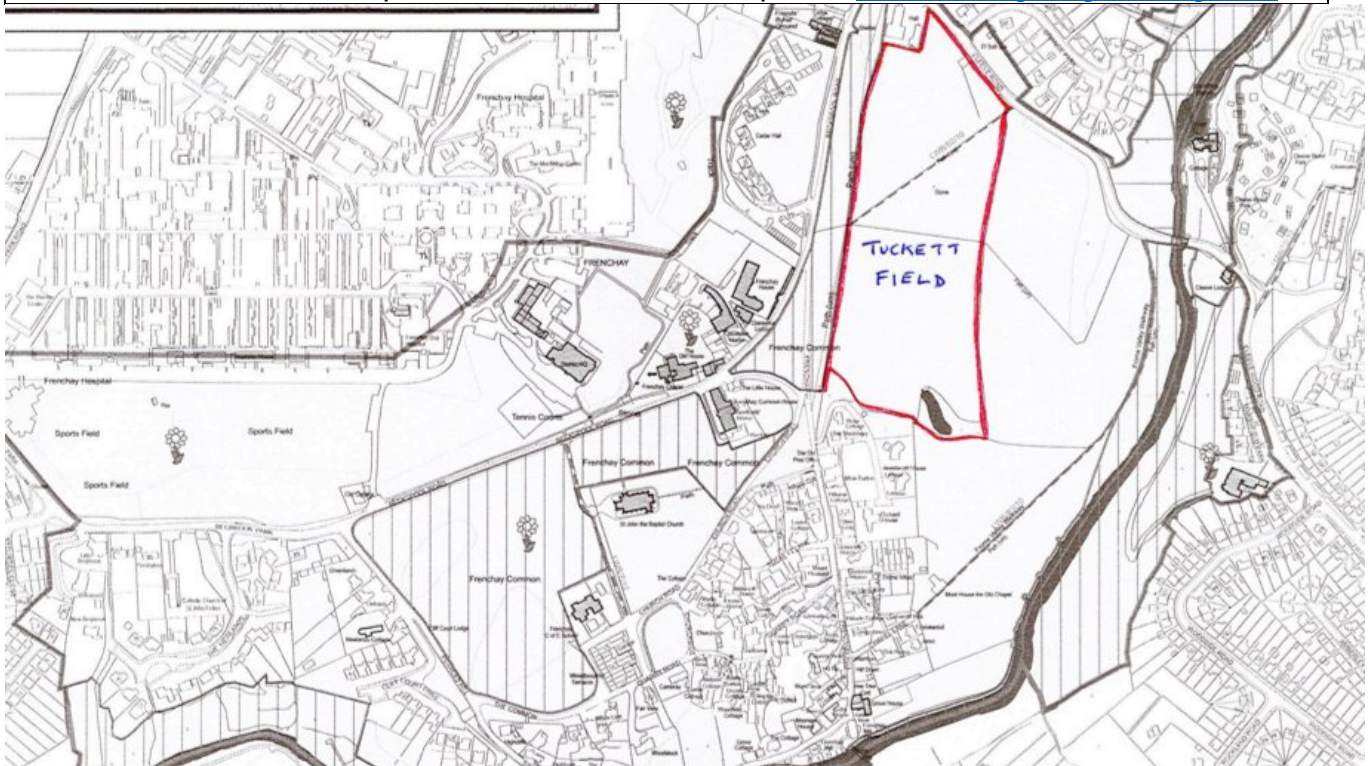
If you are objecting to the proposals to designate your land, what are your reasons? (please refer to criteria in sections C and D below in particular)

Not applicable

B) Map of proposed Local Green Space

PLEASE PROVIDE A MAP WHICH SHOWS THE BOUNDARIES OF THE PROPOSED LOCAL GREEN SPACE

If not previously provided. Please see List of Nominated Local Green Spaces and Mapped, nominated Local Green Spaces to check if this is required. www.southglos.gov.uk/lgsd15



IF YOU ARE THE LANDOWNER PLEASE PROVIDE A MAP OF YOUR OWNERSHIP

This is particularly important if this differs from the area proposed for designation e.g. if you own only part of the proposed Local Green Space, see the Mapped, nominated Local Green Spaces: www.southglos.gov.uk/lgsd15

C) Does the space meet the national criteria for designation as a Local Green Space?

Please provide a response to each of the following 5 criteria - where information has not already been provided or is incorrect in the List of nominated Local Green Spaces. (Table 1 of the Local Green Space Designation Updated Guidance Note (June 2015) www.southglos.gov.uk/lgsd15 provides further details of the criteria and guidance on what sort of information you may wish to submit):

1. Is the proposed space subject to a planning permission for development? (See Criteria 1 in the guidance note)

NO

2. Is the proposed space the subject of an allocation, or proposal to allocate, for development in the Local Plan? (See Criteria 2 in the guidance note)

NO

3. Is the proposed space an extensive tract of land and is it local in character? (See Criteria 3 in the guidance note)

The proposed space is not an extensive tract of land. It is less than 19 hectares in size. The site is within the Frenchay Conservation Area and is quoted in the Supplementary Planning Document as 'open space and fields stretching down from The Common to the river Frome. It has a natural and rural appearance and is, therefore, local in character.

4. Is the space within close proximity to the community it serves? (See Criteria 4 in the guidance note)

YES. The space is within the village of Frenchay and is easily accessible to all members of the community. It is easily accessible by road and footpaths.

5. Is the specific space demonstrably special to the local community? e.g. not a blanket designation (see Criteria 5 in the guidance note)

YES. It provides views into and out of the Conservation Area. The Parish Council are responsible for the total maintenance of this asset. The site makes a highly contributory factor to the character and distinctiveness of the local area.

D) Why is the space of particular local significance?

Please use the following response box to provide specific evidence as to how at least one of the following criteria is relevant:

Please state which criterion, 6-11, are relevant to the nominated space. Table 2 of the Local Green Space Designation Updated Guidance Note (June 2015) www.southglos.gov.uk/lgsd15 provides further details on the criteria and guidance on what sort of information you may wish to submit to justify how the space is of particular local significance and demonstrably special to the community that use it:

6. The proposed space is of particular local significance because of its beauty
7. The proposed space is of particular local significance because of its historic significance
8. The proposed space is of particular local significance because of its recreational value
9. The proposed space is of particular local significance because of its tranquillity
10. The proposed space is of particular local significance because of its richness of wildlife
11. The proposed space is of particular local significance because of another reason not covered by criteria 6-10.

LGSD1142 –Tuckett Field, Frenchay meets the following criteria:

6. The proposed space is of particular local significance because of its beauty
7. The proposed space is of particular local significance because of its historic significance
8. The proposed space is of particular local significance because of its recreational value
9. The proposed space is of particular local significance because of its tranquillity
10. The proposed space is of particular local significance because of its richness of wildlife

The land known as Tuckett Field was given to the village by a bequest as an open informal space to be enjoyed in perpetuity by locals and others alike. It is within the established Frenchay Conservation Area and protected by its Supplementary Planning Document.

6. The proposed space is of particular local significance because of its beauty. Frenchay is particularly indebted to [REDACTED] who owned this open space and replaced the hedge with a sunken wall and ditch, known as a ha-ha, to open up the magnificent vista across to the woods on the other side of the river Frome. [REDACTED] left the saddleback field, as it was then known, to the people of Frenchay for their enjoyment in perpetuity. It is particularly visually attractive with the neighbouring Frenchay Moor giving it a rural aspect and feel. It is, along with The Moor, frequently occupied by grazing cattle which enhances the countryside aspect even further.

7. The proposed space is of particular local significance because of its historic significance. [REDACTED] played a significant part in the life of Frenchay Village and were great benefactors, hence the name [REDACTED] Field. The influence of [REDACTED] also left a mark on this landscape with the creation of an ornamental pond surrounded by holm oak. Another historically distinctive feature is the large stone marking the grave of the family pet pony encircled by a group of 5 Scots pines planted to signify the [REDACTED] who lived at Frenchay Manor House.

8. The proposed space is of particular local significance because of its recreational value. Because of its geographical nature this space is unsuitable for formal recreation. It is, however, used by all the local community for dogwalking, jogging and walking. Locally it is often known as the Hillyfield and in winter when the snow arrives, the local children use the slopes as a toboggan run.

9. The proposed space is of particular local significance because of its tranquillity. Again, given its rural aspect there is much peace and calm in this space. Of particular note is the area at the bottom of the field containing the pond. Recently this has been stocked with suitable fish provided by the Parish Council.

10. The proposed space is of particular local significance because of its richness of wildlife. In May the whole field is a mass of yellow buttercup, the divisions of which are only broken by the well-used footpaths. In June this is followed by an abundant display of ladies smock. In Autumn, when conditions are favourable, it also provides a varied assortment of fungi.

Please return completed forms by close of business on 30th July 2015:

By e-mail: PlanningLDF@southglos.gov.uk

By post: Strategic Planning Policy and Specialist Advice Team, South Gloucestershire Council, Environment and Community Services Department, PO Box 299, Civic Centre, High Street, Kingswood, Bristol, BS15 0DR.

Viewing documents

The consultation documents can be viewed from: www.southglos.gov.uk/lgsd15

The consultation documents are also available to view online at:

- South Gloucestershire Libraries (please refer to www.southglos.gov.uk/libraries for locations and opening times); and
- The Council's One-Stop Shops, from 8.45am - 5pm Mondays to Wednesdays and 8.45am - 4.30pm Thursdays and Fridays, in the following locations:
 - Thornbury Library, St Mary Street, Thornbury, BS35 2AA
 - Yate, Kennedy Way, BS37 4DQ (access via West Walk)
 - Kingswood Civic Centre, High Street, Kingswood, BS15 9TR
 - Patchway Hub, Rodway Road, Patchway, BS34 5PE

Data protection

The information collected as part of this consultation will also be used by the Council in accordance with the data protection principles in the Data Protection Act 1998. The purposes for collecting this data are: to assist in plan making; and to contact you, if necessary, regarding the planning consultation process. Some of the data may be made public as it will form part of the evidence base used to inform the creation of planning policy documents. The above purposes may require public disclosure of any data received on the response form, in accordance with the Freedom of Information Act 2000.

Plan 1 Frenchay Conservation Area

Designated as a Conservation Area in 1975. Part to the north-west of the River Frome was designated by the former Northern District Council 30th July 1975. The remainder to the south-west of the river designated 13th August 1975 by the former Kingswood District Council. The area is now wholly within South Gloucestershire.

1A) Character Areas (Inset plan)

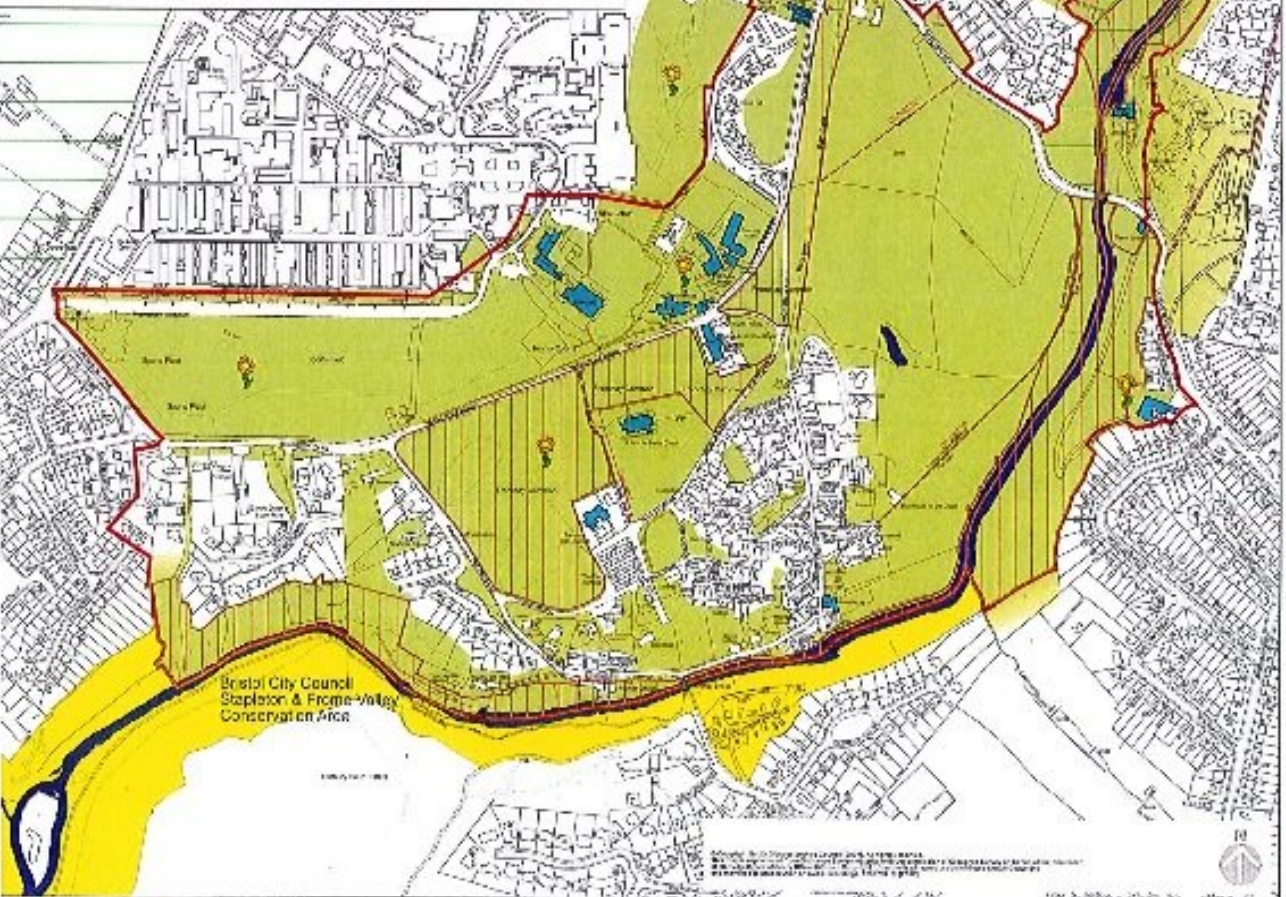
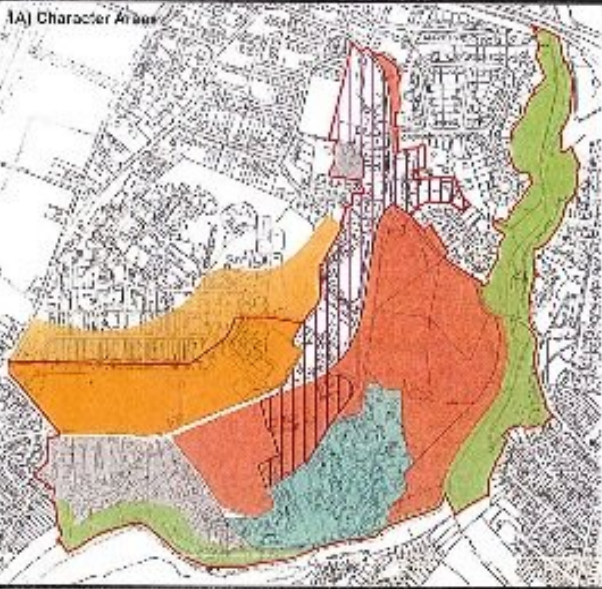
Within the Conservation Area there are a number of distinctive character areas as defined on the plan. (See pages 5 and 6 - 19 for more details)

- 1) The Wings
 - 2) Georgian houses and houses by the Downer and DeLapack Road
 - 3) Frenchay Park (1830)
 - 4) Cottages, open spaces and walls
 - 5) Riverside by Uccellance & Clewwood Road
 - 6) Area of mature trees and park
- Green areas to the west of the Frome (A) are open spaces of high quality with their own character areas

Key Local Plan Policies

The Conservation Area is located within the green area - except for a small part to the north within the Green Belt. These and other policies in the Local Plan seek to encourage good design, the protection of local distinctiveness and landscape character, trees, river valley and biodiversity. For full details of relevant policies refer to the South Gloucestershire Local Plan. Also available on line at www.southglos.gov.uk

- Conservation Area Boundary (Policy L10)
- Local Heritage (Policy L10, L14)
- Local Listed Buildings - including cottages (Policy L15)
- Public Footpaths (Policy L16)
- Green Belt (Policy G11)
- Historic Parks & Gardens (Policy L14)
- Nature Conservation (Policy L12)
- Open Spaces to be protected (Policy L12) - only in this area shown (All other will be assessed on a case by case basis)
- River (Policy 1)
- Within the Conservation Area



Map of the Frenchay Conservation Area, South Gloucestershire, 2011. The map is based on the Ordnance Survey data and is subject to the usual conditions of sale. The map is not to be used for any purpose other than that for which it was prepared. The map is the property of South Gloucestershire Council and is not to be reproduced without the written permission of the Council.